

GP Batteries

PRODUCT SPECIFICATION

Multiuse Compact Headlamp Model: CH31

Revision History

Revision	Date	Initiator	Reason for Change
1.0	4 th Jan 2019		First Release

Prepared By	Approved By
Wallace Tso	Wallace Tso
Date: 4 th Jan 2019	Date: 4 th Jan 2019

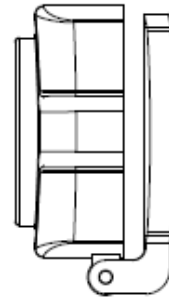
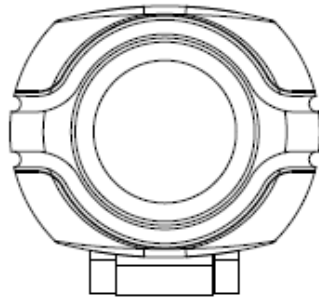
GPI International Limited

7/F, Building 16W, 16 Science Park West Avenue
Hong Kong Science Park, New Territories, Hong Kong,
Tel: (852) 2484 3333 Fax: (852) 24805912
Email: gpii@goldpeak.com
Website: <http://www.gpbatteries.com>

GP Batteries

Product Specifications

Model no.: CH31



Product Name	: Multiuse Compact Headlamp
Lumen output*	: 40lm / 12lm (+/- 15%)
Beam Distance*	: Max 8m (+/- 15%)
Runtime	: 40lm: 6 hours / 12lm: 6 hours
Battery type	: 2 x CR2025
LED chip	: Patented LED
IP rate*	: --
Shock proof*	: Impact resistant, 1m
Dimensions	: 38 x 36 x 20 mm
Weight	: 25.1 g (without batteries), 30 g (with batteries)
Accessories Included	: 2 x CR2025 (Pre-installed)
Certification	: CE, ROHS

